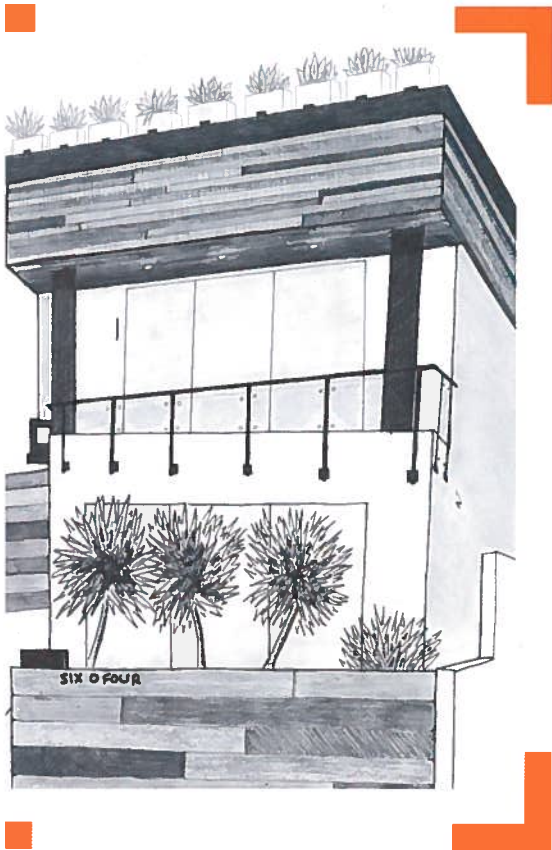




40th Annual  
Corona del Mar  
Middle & High School

# HOME TOUR 2013





## 604 Acacia Avenue, Corona del Mar

Dramatic contemporary home designed for elegant and chic indoor/outdoor entertaining.

# 4

**Square Footage:** 1,940 sq feet

**Architect:** Brandon Architects

**Builder:** Patterson Custom Homes

**Interior Design:** Ultra-Mod Home Concepts – Paige Hill

**Landscape Design:** Ultra-Mod Home Concepts, implemented by Instant Landscapes

**Florals:** Gretchen Sheppard

**Tabletops:** Crate and Barrel, South Coast Plaza

**Student Artist:** Monica Becerra

Designed with indoor/outdoor living in mind, this contemporary beauty makes stylish use of each square foot of seaside living space. The homeowners love to entertain and find themselves throwing back the retractable doors on the first floor to open the courtyard and front terrace to add more space for their lucky guests. The deck itself is constructed of a Brazilian hardwood called Ipe. Incredibly durable, it warms up the exterior façade along with plenty of greenery, even on the walls. DWR patio furniture, that actually lights up, surrounds a glass pebble firepit, making a cozy conversation corner in the courtyard.

Inside, the white epoxy floors were modeled after ones spied at a store at the Chicago Merchant Mart. The chilly beach nights and mornings are no problem as the floors are specially warmed with in-floor water pipe heating, one of the homeowner's favorite features. White Thermofoil cabinets without handles maximize storage space in the kitchen. LED lighting and backlit panels complete the sleek look downstairs.

As you venture up the stairs, you'll quickly notice the striking "shoe wall", a clever and fashionable way to display the exquisite shoe collection of the well-heeled homeowner. The master bedroom also houses the master bathroom in the same space, a trick to conserve square footage and combination that works well for these lovebirds. Automatic shades provide plenty of privacy with the touch of a button.

The third floor houses the coup de resistance, a small office which opens to another spectacular entertaining space. The large deck replete with full kitchen, luxurious seating, television, bubbling spa and incredible view is the ultimate in retreats.

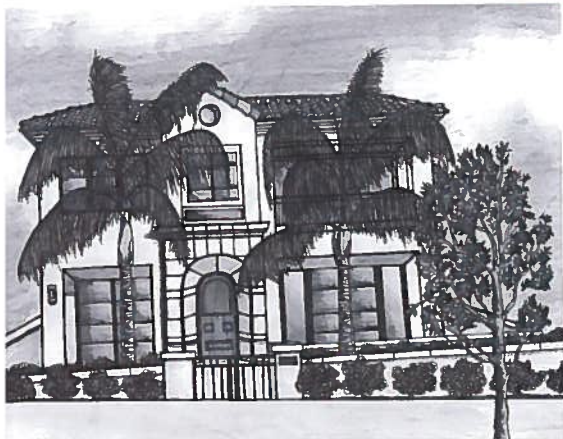
**PC** **PATTERSON**  
CUSTOM HOMES



15 CORPORATE PLAZA, SUITE 150 : NEWPORT BEACH, CALIFORNIA 92660

**949.723.1800**

[WWW.PATTERSONCUSTOMHOMES.COM](http://WWW.PATTERSONCUSTOMHOMES.COM)



# 5

**Square Footage:** 4300 sq. ft.

**Architect:** Chris Brandon

**Builder:** Patterson Custom Homes

**Interior Design –** Trish Steele – Churchill Interiors

**Landscape Design/Water Features:** Rick King Exteriors Inc.

**Tabletops:** Bloomingdale's Home Store, Fashion Island

**Florals:** Bristol Farms, Corona del Mar

**Student Artist:** Breck Damaschino

## 230 Heliotrope, Corona del Mar

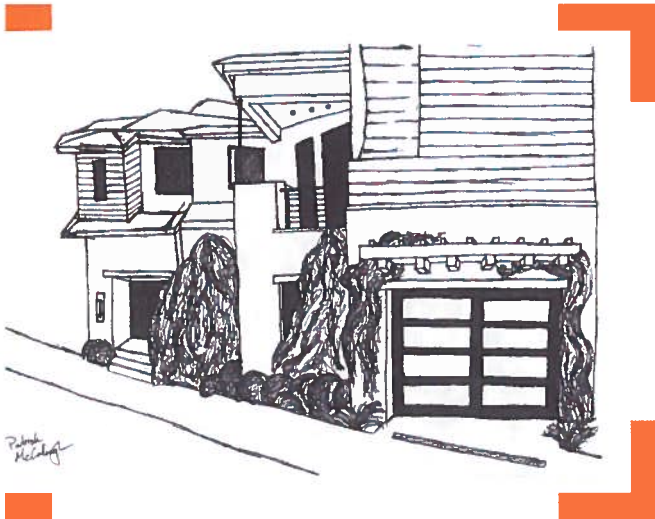
Contemporary and refined, this artist's home is truly inspirational.

Natural elements are the cornerstone for the design of this beautiful contemporary home. Fire, water and earth are all represented along with the Zen of a Buddha in the front yard. The homeowners are extremely creative; the wife is an accomplished artist whose striking art work and curated collections are on display throughout the home. The husband was involved with all interior and exterior design and material selections throughout the building process.

Warm and welcoming, your eyes won't know what to land on once you enter the front door. There is the exquisite Steinway piano, the intriguing 600 gallon salt water fish tank, the soothing crystals for positive energy and the carefully curated paintings and sculptures. Note the 14' marble island in the highly appointed kitchen. With hand distressed, French limestone floors underfoot, you'll also see massive retractable doors opening to the outdoor courtyard which features a gracious custom steel base dining table and fabulous water wall. The courtyard is canopied by palm trees and flanked by customized gas lamps, a distinct nod to the New Orleans roots of the husband.

The sleek wood and steel cable staircase lead to the second floor, housing the daughter's bedroom, guest room, the wife's enviable art studio, the husband's office, efficient gym and master suite with his and hers bathrooms. Passing the Chagall lithographs on the hallway wall, the wife's bathroom is especially luxurious. The marble floors are heated and graced with white marble and chrome details. A Victoria and Albert slipper tub beckons for a relaxing bubble bath.

Just when you think you've seen it all, climb up one more flight of stairs to the Cabana. The husband likes to joke this is taking the man cave to new heights. Inside there's a fun bar area and room to relax in the Italian made couch and leather massage chair. Exit the sliding doors, you'll encounter a custom 15' x 8' spa with another incredible water feature, BBQ, and plenty of seating to enjoy our stunning Newport sunsets in style.



# 6

Square Footage: 6,000 square feet  
 Architect: Eric Trabert & Associates  
 Builder: Patterson Custom Homes  
 Interior Design: Design Line Interiors  
 Table Tops & Accessories: Bliss Home Design, CdM  
 Florals: Corona del Mar Florist  
 Plants: Molly Wood Garden Design  
 Student Artist: Patrick McCullough

## 109 Bayside Place, Corona del Mar

Stunning art-filled waterfront home in Newport Harbor.

Situated in a private harborside enclave, this contemporary home resonates with style and refinement. Warm wood and French limestone with a leathered finish greets visitors at the front door. Entering you will be treated to an amazing display of fine art. The homeowners are avid collectors and have a substantial collection of mostly contemporary pieces by California artists. A particularly significant piece in the living room, entitled "Wake Up" by Patrick Wilson, was an inspiration point for much of the design work downstairs. Other artists represented in the homeowner's collection are Mary Corse, Nathan Olivera and Astrid Preston. The bar is a work of art in itself. Wine bottles are suspended by a stainless steel rack behind a clear door, softened with special lighting and more stonework. The result is remarkable.

Venture towards that back patio and after recovering from the spectacular harbor view, you will see an incredible wall of succulents framing a bubbling spa, BBQ and fire pit. Diners are warmed by overhead heaters, while seated at the spacious outdoor dining table. Enjoying the incredible view both day and night is one of the exceptional features of this home. Peering out to see night lights all the way down the channel to the Balboa Pavilion never gets old.

One of the homeowner's favorite rooms in the house is the gourmet kitchen. The waterfall finish of the granite at the breakfast bar and bar render a dramatic effect. The dark saw cut reclaimed walnut stairs offer a contrast to the downstairs limestone flooring and are carried through on the upper level. An elevator also provides easy access to the upper floor and for cozy nights in, a plush screening room provides just what the doctor ordered. The upstairs bedroom suites, one for a guest, one for their daughter and one stunning suite for themselves, belong in a class by themselves. Marble floors, sumptuous furnishings, views and ocean breezes make this master suite a real respite from a busy day.





15 CORPORATE PLAZA, SUITE 150 : NEWPORT BEACH, CALIFORNIA 92660

**949.723.1800**

[WWW.PATTERSONCUSTOMHOMES.COM](http://WWW.PATTERSONCUSTOMHOMES.COM)