

OC

REGISTER

MAD MAGAZINE

AUGUST 19

ROAD SHOW

BIKER CHIC
MAKES A PLAY FOR
THE FAST LANE



AT HOME

BREEZY DOES IT





BY ALEXANDRIA ABRAMIAN ➦
PHOTOGRAPHY BY JERI KOEGEL

A CORONA DEL MAR HOME GOES EASY ON THE ENVIRONMENT AS IT'S POISED TO CAPTURE COASTAL BREEZES, SUN AND STRIKING OCEAN VIEWS

No pets, plants or people is the unofficial—if only half serious—motto that homeowners Paige and Michael Hill evoke when referring to their newly built Corona del Mar home. “I love this all white, super clean look,” says Paige, who did all of the interior design in the three-story, 1,940-square-foot home. “It’s got this Miami feel that just makes me happy. But I also realized that it could look a little cold and stark, which is where our architect, Chris Brandon, came in. It took a while, but he convinced me that not everything had to be white.”

Call it a design compromise, one forged over hundreds of emailed images, telephone conversations and in-person talks. The result? A white-on-almost-all-white home warmed up by lots of natural woods and soft lighting that marries environmental elements with unapologetically glamorous details. It’s the kind of home where eye-catchingly angled walls and ceilings channel that ocean breeze into and up through the entire home, where drought-tolerant plantings have been installed for maximum dramatic appeal, and where sustainably harvested bamboo floors on the top-floor deck create the ultimate five-star, ocean-viewing perch.

**➦ FROM THE TOP-FLOOR
DECK OF THIS NEWLY
BUILT CORONA DEL
MAR HOME, TROPITONE
MODULAR FURNITURE
SURROUNDS THE FIREPIT
AND FACES A CLEVERLY
PLACED FLAT SCREEN.**



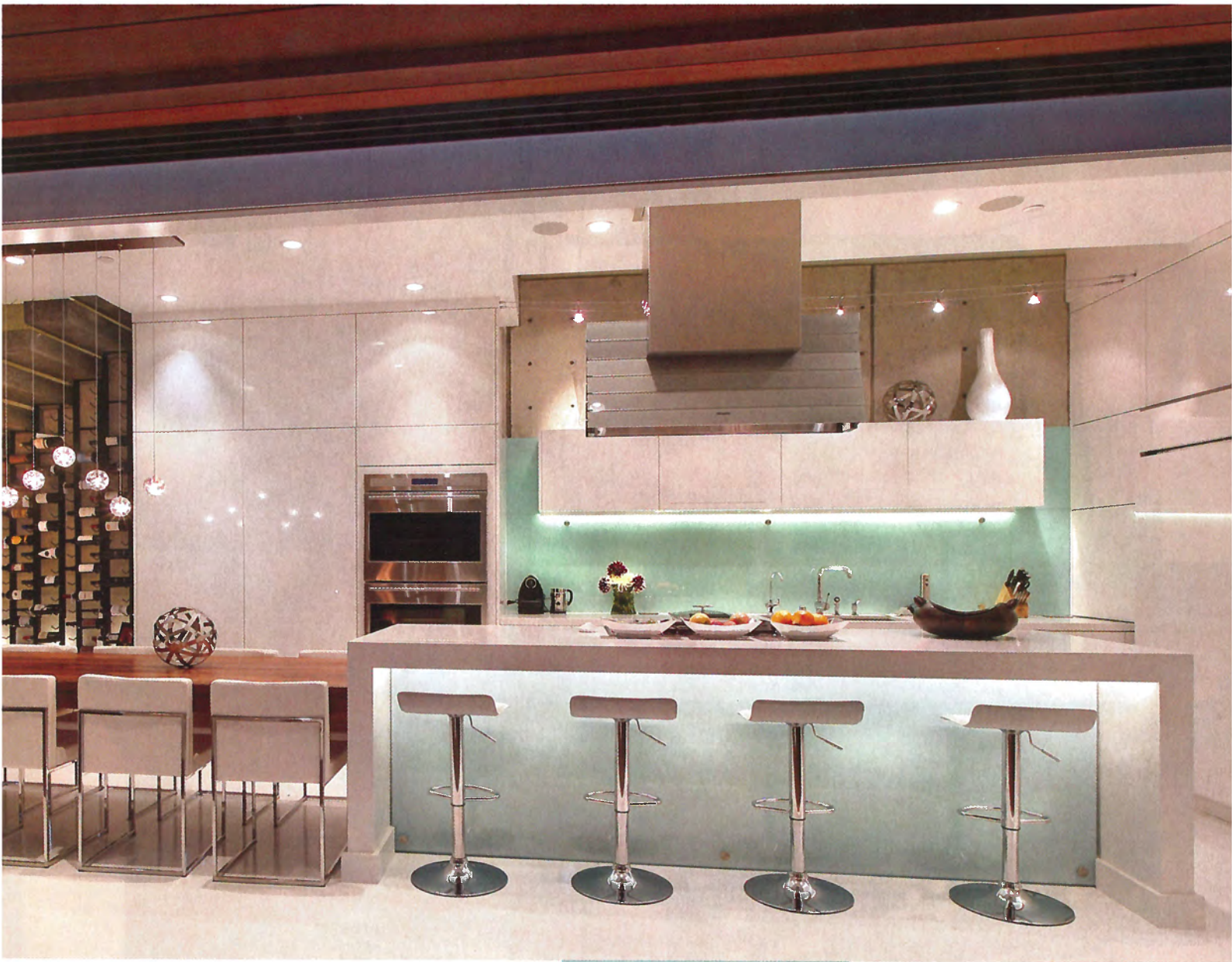
Then there are the not so exactly tree-hugging details like the 17-foot-high “shoe wall” in the master bedroom, complete with a library ladder that allows Paige to slide over to that perfect pair of heels. “There isn’t room here for huge closets,” says Paige, “so this not only freed up space, but it almost became an art feature.”

While Paige may have focused on where she would put her shoes, along with where to source the home’s striking and minimalist furniture, lighting and finishings, Brandon, of Costa Mesa-based Brandon Architects, had other challenges to contend with: One of them being how to create a tall and narrow home that would be open enough to capture breeze, light, and views. “It’s an exposed glass and steel structure,” says Brandon, who worked with Newport Beach-based Patterson Construction, who built the home. “We did it that way because in these kinds

➡ OPPOSITE: THE HOME MAKES A MODERN STATEMENT FROM THE STREET IN CORONA DEL MAR. ➡ TOP: THE LIVING ROOM FEATURES A LOW-SLUNG SOFA FROM ROOM & BOARD AND A FIREPLACE THAT IS POSITIONED BELOW A MAFI HARDWOOD WALL. ➡ BOTTOM: THE BOTTOM FLOOR’S OPEN PLAN DESIGN INCLUDES THE LIVING ROOM, DINING AREA AND KITCHEN.







of narrow homes, you want to make them feel as open as possible.”

The other challenge was to get the top floor deck as high and wide as possible, the better to invite ocean-gazing in high style. “That top-floor open space really is their yard,” says Brandon. “So we put the deck at the front of the home where it’s closest to the ocean.” And on the ground floor, Brandon put just as much thought into the south-side courtyard, where it’s perfectly poised to capture onshore breezes and light. “It’s a trick to get natural light and ventilation down there, but we did that by angling the wood.” Conversely, Brandon placed the majority of the glass components on the north side of the building to reduce heat gain. Add to that a smart system whereby motorized shades rise and lower according to

➡ **CLOCKWISE FROM TOP LEFT: DESIGNER PAIGE HILL USED DESIGN WITHIN REACH’S CHESTER OUTDOOR COLLECTION, WHICH LIGHTS UP, IN THE GROUND FLOOR COURTYARD AREA. ➡ THE DINING TABLE CANTILEVERS OFF THE KITCHEN ISLAND AND IS BUILT ONTO IT TO SAVE SPACE. ➡ THERMOFOIL, HANDLE-LESS CABINETS GIVES THE KITCHEN A SUPER SLEEK LOOK.**



the sun, and you've got a house where AC need rarely apply.

Aesthetically, Brandon addressed that small lot size by designing a home that would connect as much as possible with its outdoor areas. Pocket doors are used throughout the house, most dramatically in the ground-floor courtyard space where, when pulled back, they turn the relatively small kitchen/dining area into a huge indoor/outdoor entertaining space.

Not that the Hills want the whole block over every weekend. "This is the perfect home for the two of us to hang out," says Paige. "It's exactly what I had in mind." ♦



➡ THE DECK-LEVEL GUEST QUARTERS INCLUDES A MINI KITCHEN; RAFFAELE IANNELLO'S THE EX KNIFE HOLDER IN RED.